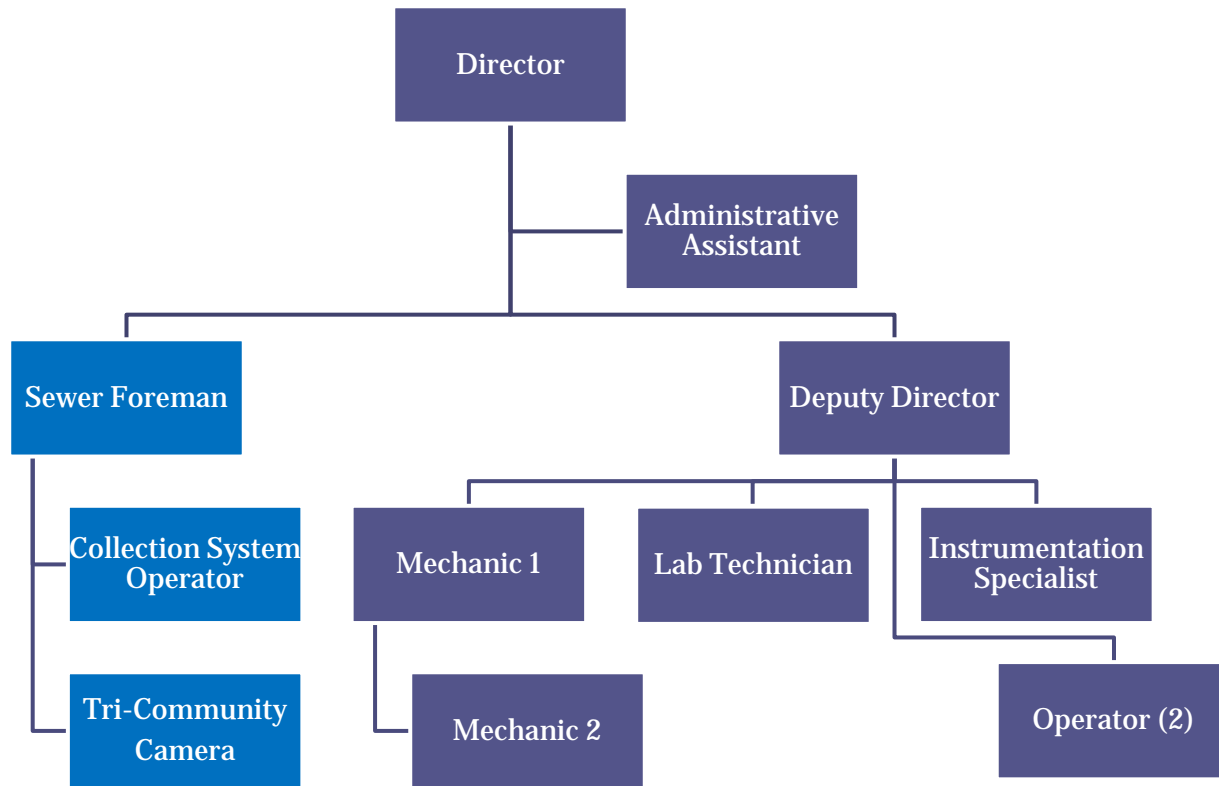


Introduction to Department

- **Total Customers:** 4,869
- **Design Capacity:** 4.2 MGD
- **Peak Flows:** 8.4 MGD
- **Annual Budget:** \$2.4 Million
- **31 Pump Stations**
- **73 Miles of Gravity Line**
- **21 Miles of Force Main**



Introduction to Department



9 Full-Time WRRD
Employees and 3
Additional Employees
Shared with DPW

Mission Statement:
“The City of Saco Water
Resource Recovery
Department will provide
our customers with
highest level of quality
services through
responsible, sustainable,
and creative stewardship
of the resources and
assets we manage. We
pledge to do this with a
productive and talented
workforce, while always
striving for excellence.”

We Accomplish this Mission in Two Parts:

Part One:

Protecting the health & well being of all who live, work & play within the city. We achieve this by conveying all liquid waste from their homes & businesses to the resource recovery facility for processing.

- It has been documented that sewers & treatment facilities are the ***single biggest*** medical breakthrough in the last century.
- Providing sanitary conditions to all is paramount to eradicating water borne diseases that plagued this country years ago.

Part Two:

The protection of one of the City's largest resources: the Saco River. Although it is no longer the lifeline of commerce, it was in years past. It provides a tremendous recreational value to all citizens and a revenue source to numerous entities.



The three main components of the WRRD:

- 1. The collection or sanitary sewer lines**
- 2. Pumping stations**
- 3. Resource Recovery Facility**

Collection or sanitary sewer lines:

A critical piece of the City's infrastructure largely unnoticed by the general public.

- **Approximately 94 miles of gravity and force main pipes in the ground throughout Saco.**
- **Requires diligent maintenance to prevent blockages and overflows.**
- **It is essential to abate any sources of inflow or infiltration of groundwater due to settling or crushed pipes and structures to help with the closure of any Combined Sewer Overflow structures.**

Pumping Stations: Key Components

- Without these-public sewer would not have been possible in many areas of the community.
- With a combined worth in the millions of dollars, the 31 pump stations represent almost 15% of the annual WRRD budget



Glenhaven 1



Cascade Brook



Ross Ridge



Industrial Park

Water Resource Recovery Facility:

At 75% of the total budget the Water Resource Recovery Facility is the heart of the system. It is here that water is cleaned & reintroduced into the Saco River. Staff continuously strive for enhanced performance utilizing newer technologies as they emerge. With ever changing environmental regulations along with increasingly stringent requirements, it is imperative to always be moving forward while maintaining a stable rate structure for the customers.

Current/Ongoing Projects

- Slip lining of the Main street Brick sewer.
- Closure of the Bearbrook CSO Structure.
- Rehabilitation of the Windy Point Pump Station.
- Promenade and Hall sewer rehabilitation project.



Emerging areas of concern

Rising sea levels – it is estimated that levels could rise as much as 6 feet by the Saco Bay Sea level Adaptation Group (SLAWG) by the turn of the century. This will impact the WRRD in a number of ways and we must plan accordingly for future Capital Improvement Projects and Operational Procedures.

Emerging Pollutants- Nitrogen, Phosphorus, and Micro – Constituents (medicine) are areas that the USEPA and MeDEP are currently focusing on and future discharge permits will reflect that. Ocean Acidification is another concern that may impact us in the future.

Emerging areas of concern

Main, Water, and Front Street Utilities- Oval brick sewers as large as 6 feet in diameter were installed in these roads nearly 125 years ago. They are starting show their age as evidenced by the emergency repair in Water Street a couple of years ago. These will need to be rehabilitated in the near future.

Stormwater Management- Every 5 year cycle the requirements of the MS4 stormwater permit become increasingly stringent and costly. With the USEPA exploring integrated permitting (one permit holder for the WRRD, CSO's, and Stormwater) it is imperative that we continue the strong interdepartmental working relationship amongst city staff.

