

Water Resource Recovery Department

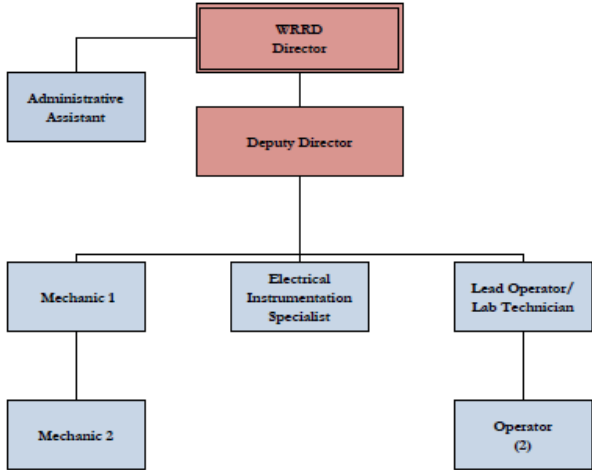
Department Head: Howard Carter

Mission Statement: “The City of Saco Water Resource Recovery Department will provide our customers with the highest level of quality services through responsible, sustainable, and creative stewardship of the resources and assets we manage. We pledge to do this with a productive and talented workforce, while always striving for excellence.”

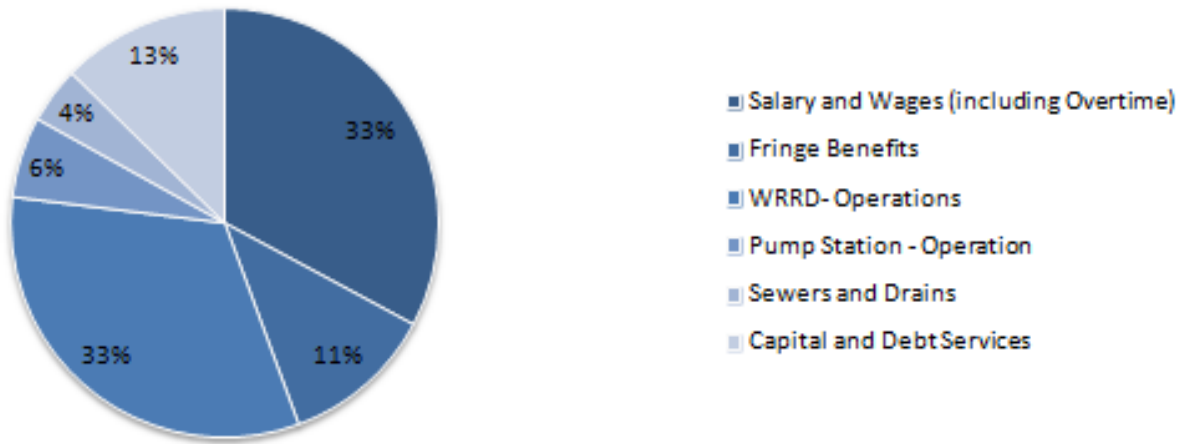
Programs and Services Provided:

- **Water Resource Recovery Facility and Pumping Stations:** The Water Resource Recovery facility is at the heart of the system. It is here that water is cleaned and reintroduced into the Saco River. With ever changing environmental regulations and progressively stringent requirements, staff members continuously strive for enhanced performance, utilizing newer technologies as they emerge while maintaining a stable rate structure for the customers. Pump Stations are also key components of the department. Without these, public sewers would not have been possible in many areas of the community.
- **Combined Sewer Overflow (CSO):** Combined sewer systems are sewers that are designed to collect rainwater runoff, domestic sewage, and industrial wastewater in the same pipe. A majority of the time, combined sewer systems transport all of the wastewater to the Water Resource Recovery Facility where it is treated and then discharged into the Saco River. During periods of exceptionally heavy precipitation the wastewater volume in a combined sewer system exceeds the capacity of the Water Resource Recovery Facility. For this reason, combined sewer systems are designed to overflow occasionally and discharge excess wastewater directly to nearby streams, rivers, or other bodies of water. At this time, Saco has 4 active CSO's, down from the original 9 at the beginning of the abatement program that started in 1995. The four remaining CSO's in Saco are concentrated in the downtown area; three discharge into the Saco River while the fourth discharges into Bear Brook.

**Water Resource Recovery Department
Organization Chart**



Water Resource Recovery Budget Allocation



Department: Water Resource Recovery

Program: Combined Sewer Outflow

Measure Type		2015	2014	2013	2012	2011
Inputs	# of FT employees	3	3	3	3	3
Outputs	# of catch basins removed from combined sewer system	5	2	0	2	0
	# of catch basins tied to the combined sewer system	95	100	102	102	104
	Miles of piping	72.4	72.4	72.4	71.8	71.5
Efficiencies	# of CSO's	4	4	4	4	4
	% Reduction from original number of CSO's	56	56	56	56	56
	Gallons discharged from CSO'S (MGD)	1.06	1.74	1.10	2.96	1.37
	Total Rainfall for Year (in.)	34.94	48.96	40.43	46.64	49.26
Outcomes	No measureable outcomes at this time					

Department: Water Resource Recovery

Program: Facility & Pump Stations

Measure Type		2015	2014	2013	2012	2011
Inputs	# of FT employees	9	9	10	10	10
	Budget allocation	\$2.643 Mil	\$2.348 Mil	\$2.096 Mil	\$2.569 Mil	\$2.577 Mil
Outputs	# of pump stations	29	29	29	29	29
Efficiencies	Gallons treated per year (MGD)	672.74	837.33	766.66	741.01	827.6
	Average Gallons Treated per day (MGD)	1.84	2.29	2.10	2.02	2.26
Outcomes	Tons of biosolids to composting per year.	1,686.44	1,716.47	1,692.69	1,585.91	1,641.16
	% BOD Removal	95.1	91.9	95.3	94.1	92.3
	% TSS Removal	97.2	95.5	97.2	96.8	95.8
	Sewer Rate (/100 cu.ft. of water)	\$4.63	\$4.63	\$4.56	\$4.50	\$4.20