

(DR-2) CITY OF SACO
4'-0" DIAMETER PRECAST CATCH BASIN

WITH CURB INLET

N.T.S.

Short Form Specifications:

Material: **PRECAST CONCRETE CATCH BASIN SECTIONS;
CAST IRON FRAME AND GRATE; SEWER BRICK** QA/QC: **PROTECT STRUCTURE WITH SEDIMENT BARRIERS
UPON INSTALLATION.**

Submittal: **SHOP DRAWINGS, PRODUCT DATA** Completion: **REMOVE SEDIMENT BARRIER UPON
STABILIZATION OF TRIBUTARY AREA.**

Installation: **SEE THE FOLLOWING STANDARD SPECIFICATION SECTIONS: 02220 – EXCAVATION, BACKFILL AND
COMPACTION, 02605 – MANHOLE AND CATCH BASIN STRUCTURES, 02720 – STORM SEWER SYSTEMS.**

Design Checklist:

Use: **AT CURB LINE OF ROADWAYS TO COLLECT GUTTER FLOW.**

Computations: **INLET CAPACITY SHOULD BE CHECKED FOR A 50-YEAR, 24 HOUR DESIGN STORM.**

INLET I.D.	FLOW

Water Quality Provisions:

GRATE PROVIDES TRAP FOR LARGE DEBRIS. 2 FOOT SUMP ALLOWS SETTLEMENT OF FINES.

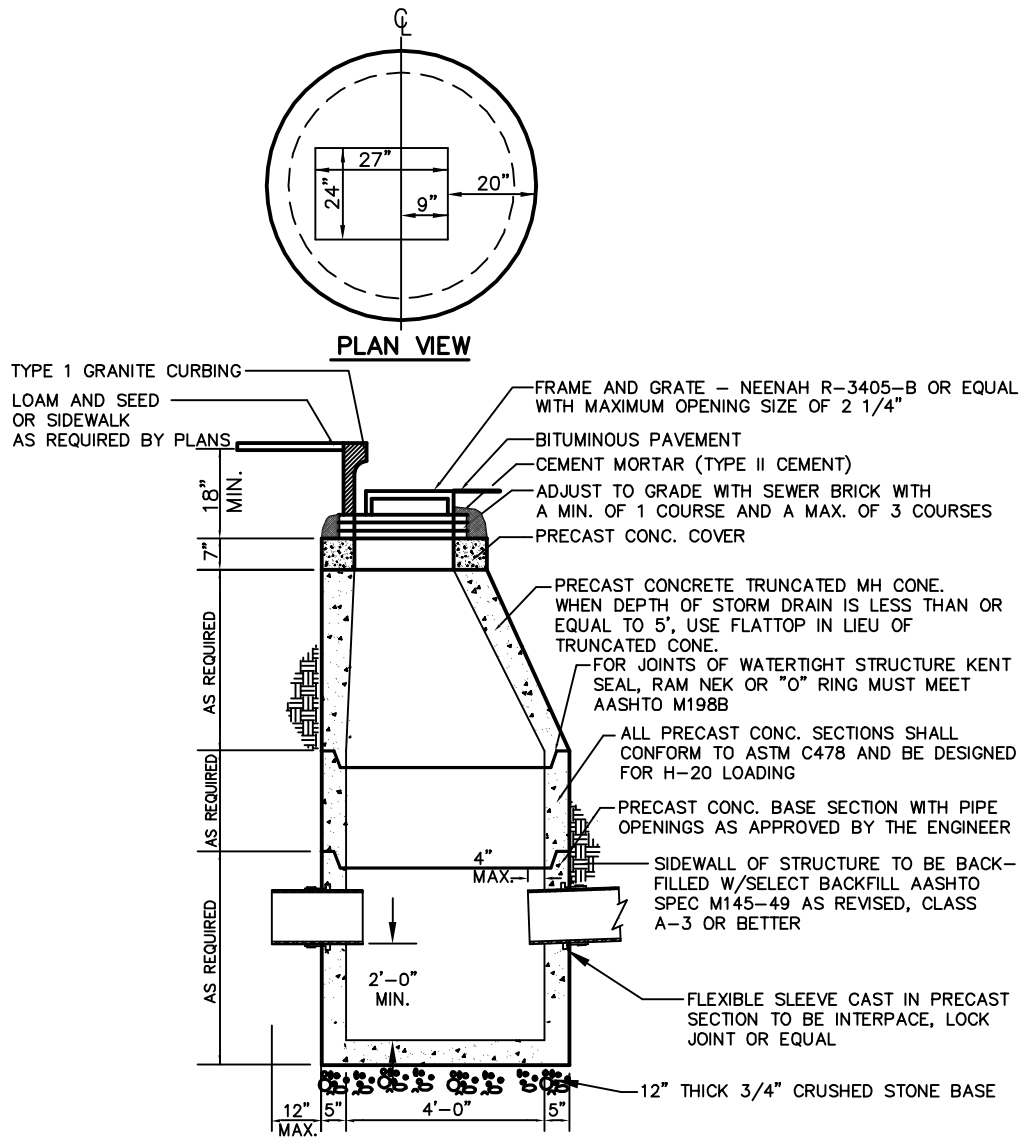
Cross Reference:

Zoning/Site Plan Review: **ARTICLE 8 – "GOOD NEIGHBOR" PERFORMANCE STANDARDS, PARAGRAPH 805 – STORMWATER
RUNOFF**

Subdivision Review: **ARTICLE 10, PARAGRAPH 10.12 – STORMWATER MANAGEMENT; ARTICLE 11, PARAGRAPH 11.14
– STORM AND SURFACE DRAINAGE.**

ASCE MREP No. 77: **CHAPTER 8 – DESIGN OF DRAINAGE CONVEYANCES.**

MEDEP STORMWATER BMP: **N/A**



(DR-2) CITY OF SACO
 4'-0" DIAMETER PRECAST CATCH BASIN
 WITH CURB INLET

N.T.S.