

(DR-4) CITY OF SACO
GUTTER GRADE TRANSITION AT CATCH BASIN

N.T.S.

Short Form Specifications:

Material: **N/A**

Submittal: **N/A**

Installation: **SEE THE FOLLOWING STANDARD SPECIFICATION SECTIONS: 02200 – EARTHWORK; 02220 – EXCAVATION, BACKFILL AND COMPACTION; 02505 – PAVING BASE AND SUBBASE COURSE; 02511 – ASPHALTIC CONCRETE PAVING; 02525 – CURBS AND SIDEWALKS; 02605 – MANHOLE AND CATCH BASIN STRUCTURES; 02720 – STORM SEWER SYSTEMS.**

QA/QC: **PROTECT INLET WITH SEDIMENT BARRIER, VERIFY ACTUAL RIM GRADE.**

Completion: **REMOVE SEDIMENT BARRIER UPON STABILIZATION OF TRIBUTARY AREA.**

Design Checklist:

Use: **AT ALL CATCH BASIN LOCATIONS TO PROVIDE 3" DEPRESSION AT GRADE.**

Computations: **COMPUTE ACTUAL RIM GRADE VS. TYPICAL GUTTER GRADE.**

Water Quality Provisions:

N/A

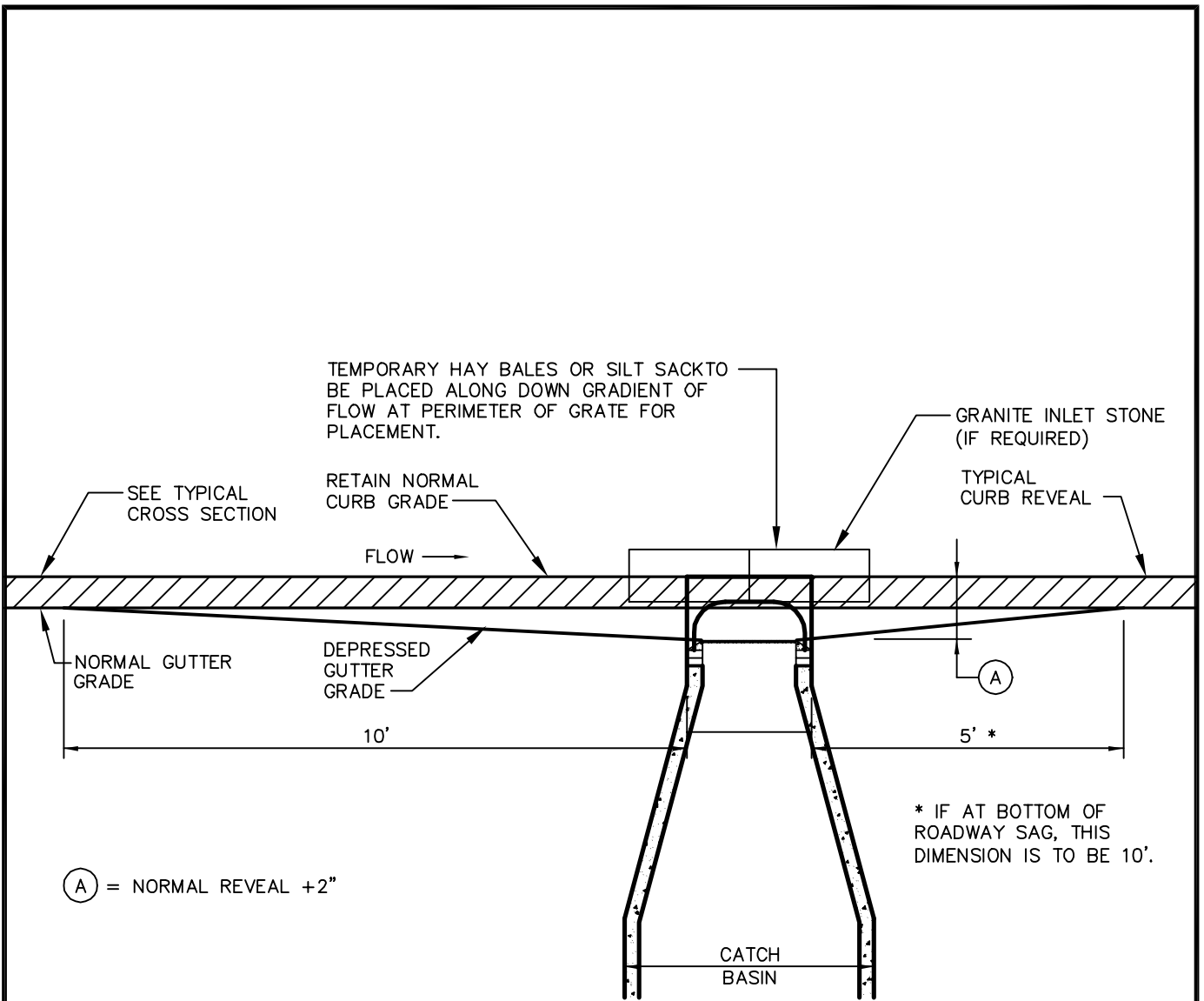
Cross Reference:

Zoning/Site Plan Review: **ARTICLE 8 – "GOOD NEIGHBOR" PERFORMANCE STANDARDS, PARAGRAPH 805 – STORMWATER RUNOFF**

Subdivision Review: **ARTICLE 10, PARAGRAPH 10.12 – STORMWATER MANAGEMENT; ARTICLE 11, PARAGRAPH 11.14 – STORM AND SURFACE DRAINAGE.**

ASCE MREP No. 77: **CHAPTER 8 – DESIGN OF DRAINAGE CONVEYANCES.**

MEDEP STORMWATER BMP: **N/A**



(DR-4) CITY OF SACO
GUTTER GRADE TRANSITION AT CATCH BASIN

N.T.S.