

**(ES-11) CITY OF SACO
STONE SEDIMENT BARRIER**

N.T.S.

Short Form Specifications:

Material: **3/4" CRUSHED STONE, CONCRETE BLOCKS, WIRE
SCREEN**

Submittal: **N/A**

Installation: **CONSTRUCT AT ALL CATCH BASIN STRUCTURES ONCE
STRUCTURE IS IN PLACE.**

QA/QC: **INSPECT AFTER EACH STORM EVENT. REMOVE
SEDIMENT AND WASH STONE AT 50% ACCUMULATION.**

Completion: **ONCE TRIBUTARY AREA HAS BEEN STABILIZED, REMOVE
BARRIER. VEGETATIVE COVER MUST ACHIEVE 75%
CATCH.**

Design Checklist:

Use: **PLACE AT ALL CATCH BASIN STRUCTURES DURING CONSTRUCTION.**

Computations: **N/A**

Water Quality Provisions:

PREVENTS SEDIMENT FROM ENTERING STORM DRAIN SYSTEM DURING CONSTRUCTION.

Cross Reference:

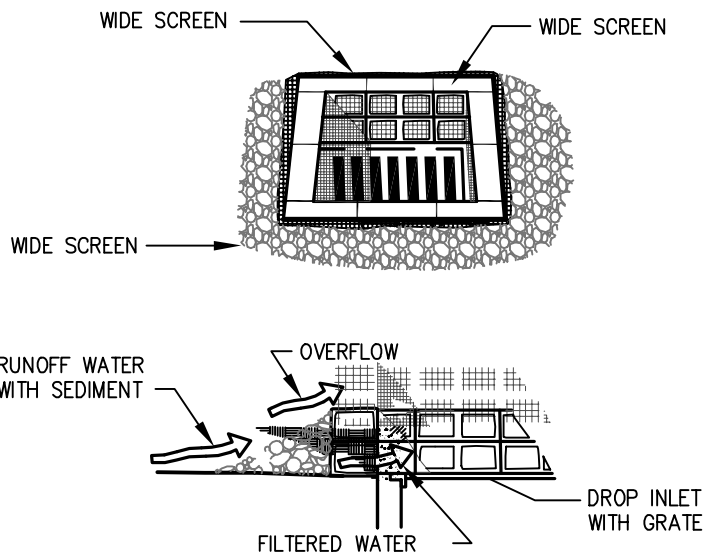
Zoning/Site Plan Review: **ARTICLE 8 – GOOD NEIGHBOR PERFORMANCE STANDARDS, SECTION 806 – EROSION CONTROL**

Subdivision Review: **ARTICLE 5 – PRELIMINARY PLAN, PARAGRAPH 5.2.2(17)**

Erosion Control BMP: **SECTION 16.0 – STORM DRAIN INLET PROTECTION**

ASCE MREP No. 77: **N/A**

MEDEP STORMWATER BMP: **N/A**



SPECIFIC APPLICATION

THIS METHOD OF INLET PROTECTION IS APPLICABLE WHERE HEAVY FLOWS ARE EXPECTED AND WHERE AN OVERFLOW CAPACITY IS NECESSARY TO PREVENT EXCESSIVE PONDING AROUND THE STRUCTURE.

NOTES:

1. PLACE CONCRETE BLOCKS LENGTHWISE ON THEIR SIDES IN A SINGLE ROW AROUND THE PERIMETER OF THE INLET, WITH THE ENDS OF ADJACENT BLOCKS ABUTTING. THE HEIGHT OF THE BARRIER CAN BE VARIED, DEPENDING ON DESIGN NEEDS. BY STACKING COMBINATIONS OF 4", 8" AND 12" WIDE BLOCKS. THE BARRIER OF BLOCKS SHALL BE AT LEAST 12 INCHES HIGH, AND NO GREATER THAN 24" HIGH.
2. WIRE MESH SHALL BE PLACED OVER THE OUTSIDE VERTICAL FACE (WEBBING) OF THE CONCRETE BLOCKS TO PREVENT STONE FROM BEING WASHED THROUGH THE HOLES IN THE BLOCKS. HARDWARE CLOTH OR COMPARABLE WIRE MESH WITH 1/2" OPENINGS SHALL BE USED.
3. STONE SHALL BE PILED AGAINST THE WIRE TO THE TOP OF THE BLOCK BARRIER, AS SHOWN IN DETAIL. THE STONE FILTER SHALL BE 3/4" CRUSHED STONE.
4. IF THE STONE FILTER BECOMES CLOGGED WITH SEDIMENT, SO THAT IT NO LONGER ADEQUATELY PERFORMS ITS FUNCTION, THE STONE MUST BE PULLED AWAY FROM THE BLOCKS, CLEANED AND REPLACED.
5. PREMANUFACTURED SILT-SACKS MAY BE USED AS AN EQUIVALENT TO STONE SEDIMENT BARRIERS.

(ES-11) CITY OF SACO STONE SEDIMENT BARRIER

N.T.S.