

**(ES-16) CITY OF SACO  
RCP FLARED END WITH BAR RACK DETAIL \***

N.T.S.

**Short Form Specifications:**

Material:	<b>REINFORCED CONCRETE END SECTION, ALUMINUM BAR STOCK, STAINLESS STEEL HARDWARE</b>	QA/QC:	<b>INSPECT BAR RACK FOR DEBRIS ACCUMULATION. REMOVE DEBRIS AS NECESSARY.</b>
Submittal:	<b>SHOP DRAWINGS FOR FLARED END SECTION AND BAR RACK.</b>	Completion:	<b>N/A</b>
Installation:	<b>INSTALL FLARED END PER MANUFACTURER'S RECOMMENDATIONS.</b>		

**Design Checklist:**

Use: **USE ON ALL CULVERT INLETS AND OUTLETS 18" IN DIAMETER AND LARGER.**

Computations: **N/A**

**Water Quality Provisions:**

**PREVENTS LARGE DEBRIS FROM ENTERING STORM DRAIN SYSTEM.**

**Cross Reference:**

Zoning/Site Plan Review: **ARTICLE 8 – GOOD NEIGHBOR PERFORMANCE STANDARDS, SECTION 806 – EROSION CONTROL**

Subdivision Review: **ARTICLE 5 – PRELIMINARY PLAN, PARAGRAPH 5.2.2(17)**

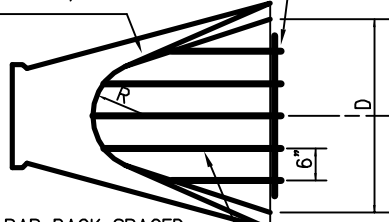
Erosion Control BMP: **N/A**

ASCE MREP No. 77: **CHAPTER 6, P.308**

MEDEP STORMWATER BMP: **N/A**

4" x 1/2" x 2'-6" ALUMINUM MOUNTING BAR W/ 4 - 3/8" ANCHOR BOLTS FOR SECURING MOUNTING BAR TO RCP FLARED END

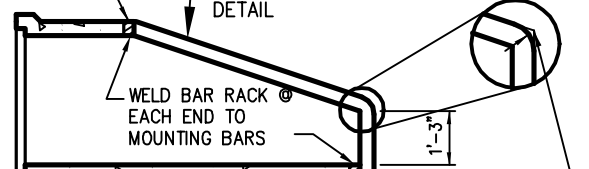
4" x 1/2" x 8'-0" ALUMINUM BAR SHAPED TO FIT FLARED END FILLET & SIDEWALL. SECURE MOUNTING BAR TO RCP FLARED END W/ 6 - 3/8" ANCHOR BOLTS



3" x 1/2" ALUMINUM BAR RACK SPACED EVENLY @ 6" O.C. WELD BAR RACK @ EACH END TO MOUNTING BARS

4" x 1/2" x 8'-0" ALUMINUM BAR SHAPED TO FIT FLARED END FILLET & SIDEWALL. SECURE MOUNTING BAR TO RCP FLARED END W/ 6 - 3/8" ANCHOR BOLTS

3" x 1/2" ALUMINUM BAR RACK SPACED EVENLY @ 6" O.C. RACK SEE DETAIL



4" x 1/2" x 2'-6" ALUMINUM MOUNTING BAR W/ 4 - 3/8" ANCHOR BOLTS FOR SECURING MOUNTING BAR TO RCP FLARED END

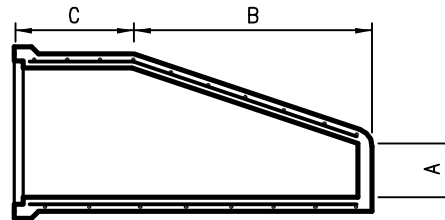
REMOVE & TRIM BARS AS SHOWN

**PLAN VIEW - TYP. EACH PIPE**

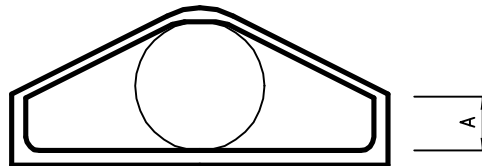
DIA.	A	B	C	D	E	R
18"	9"	2'-3"	3'-10"	3'-0"	2 1/2"	11"
24"	9 1/2"	3'-7 1/2"	2'-6"	4'-0"	3"	14"
30"	12"	4'-6"	1'-7 3/4"	5'-0"	3 1/2"	15"
36"	15"	5'-3"	2'-10 3/4"	6'-0"	4"	20"
42"	21"	5'-3"	2'-11"	6'-6"	4 1/2"	22"
48"	24"	6'-0"	2'-2"	7'-0"	5"	22"
54"	27"	5'-5"	2'-11"	7'-6"	5 1/2"	24"
60"	30"	5'-0"	3'-3"	8'-0"	6"	24"

**NOTE:**  
JOINTS MAY BE FURNISHED WITH EITHER BELL & SPIGOT OR TOUNGE & GROOVE ENDS.

**SECTION**



**SECTION**



**END VIEW**

\* BAR RACKS ARE ONLY REQUIRED ON PIPES 18" AND OVER IN SIZE.

\* USE FIELD MITRE FOR CULVERTS WITH A DIAMETER OF LESS THAN 18"

(ES-16) CITY OF SACO  
RCP FLARED END WITH BAR RACK DETAIL \*

N.T.S.