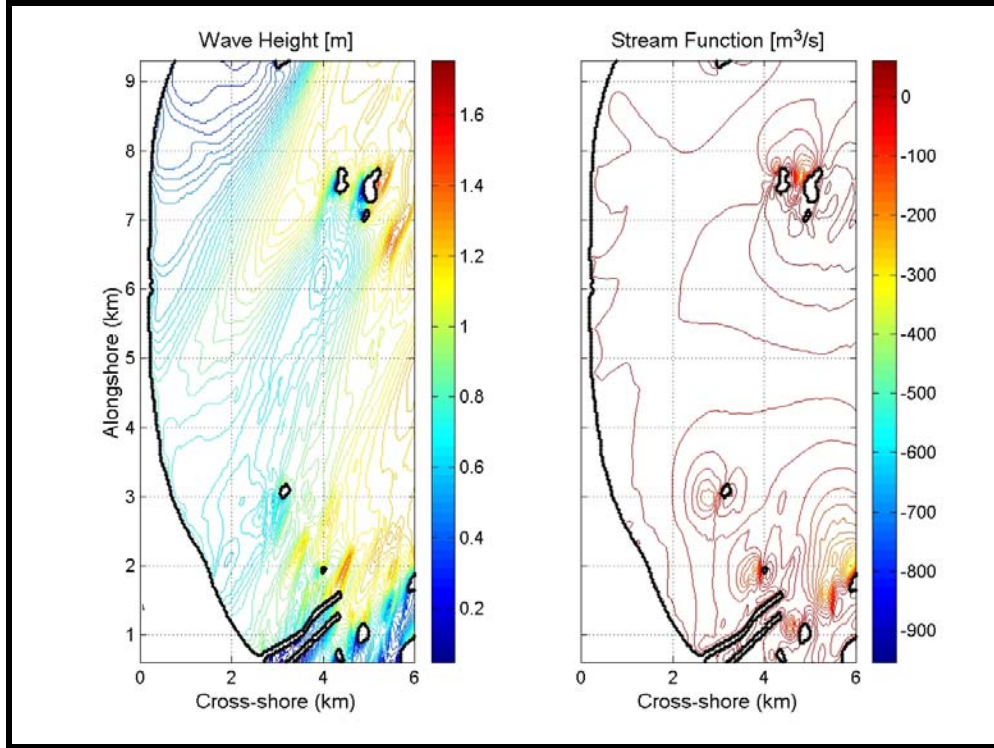


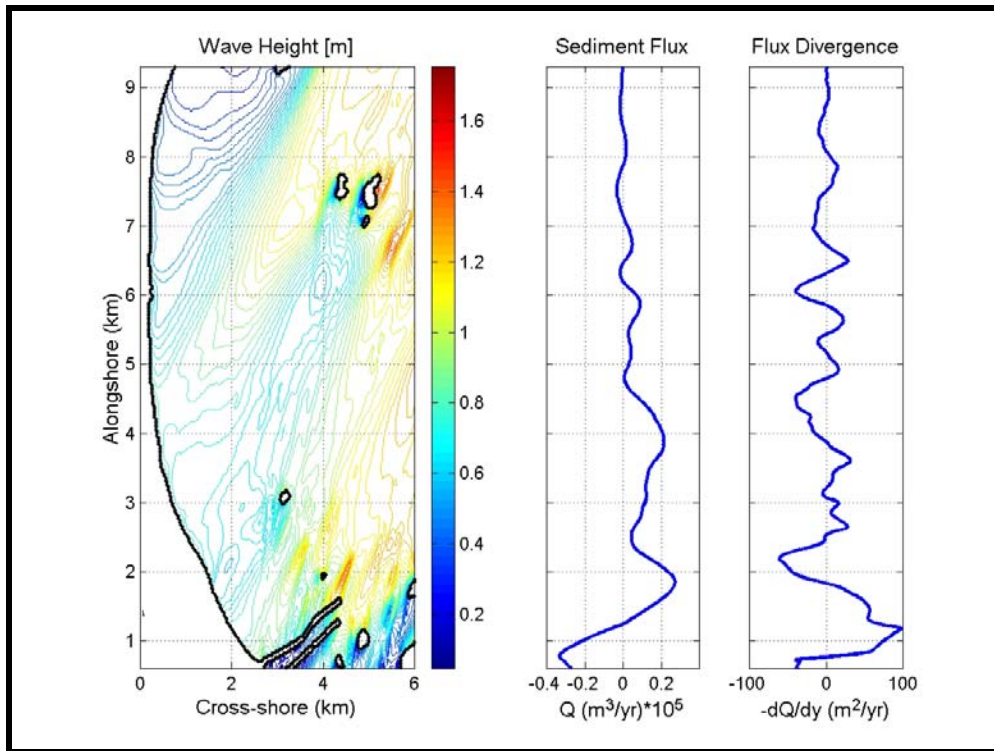
Appendix 13.0-B

---

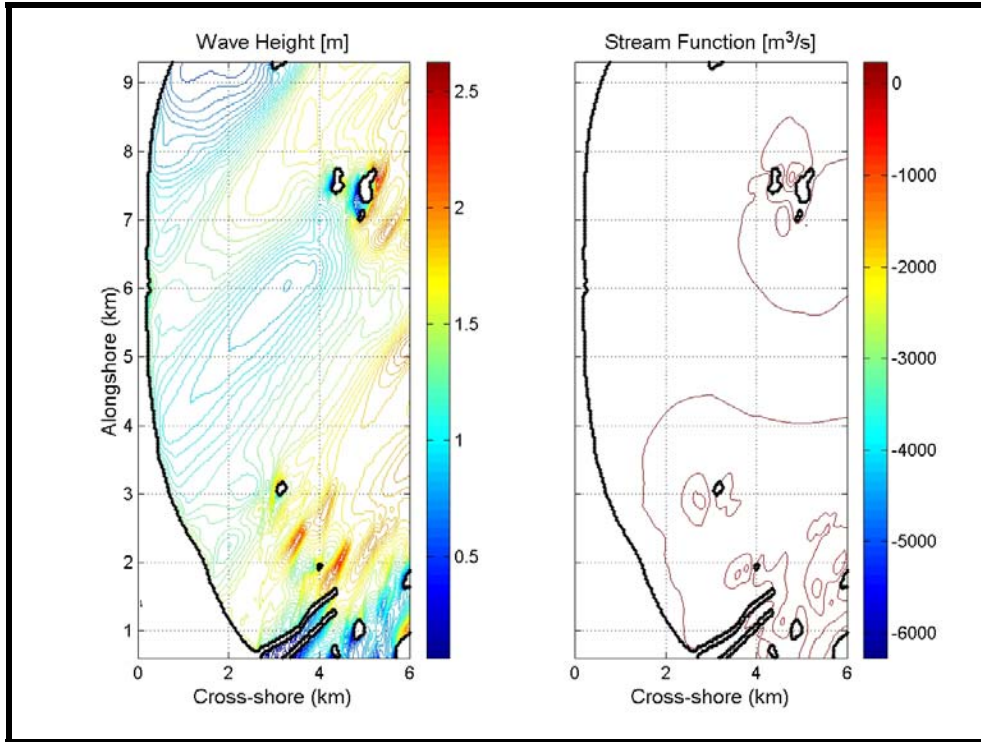
Regional Sediment Transport Results



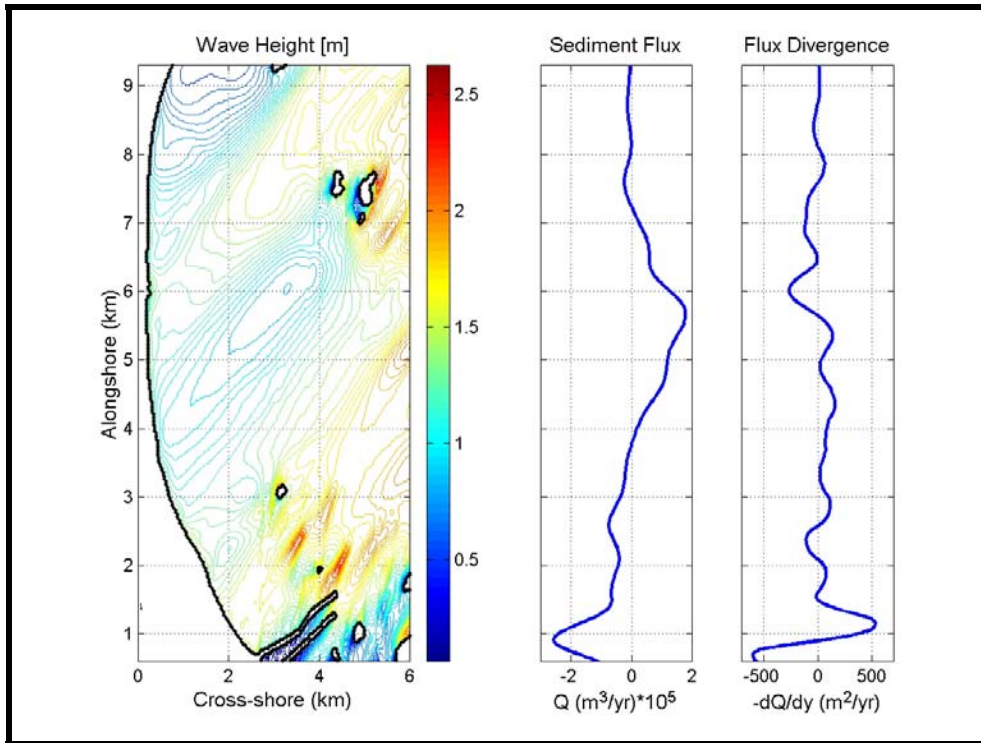
**Figure 13-B1. Wave height and stream function for a northeast (55 to 75 degree) approach condition.**



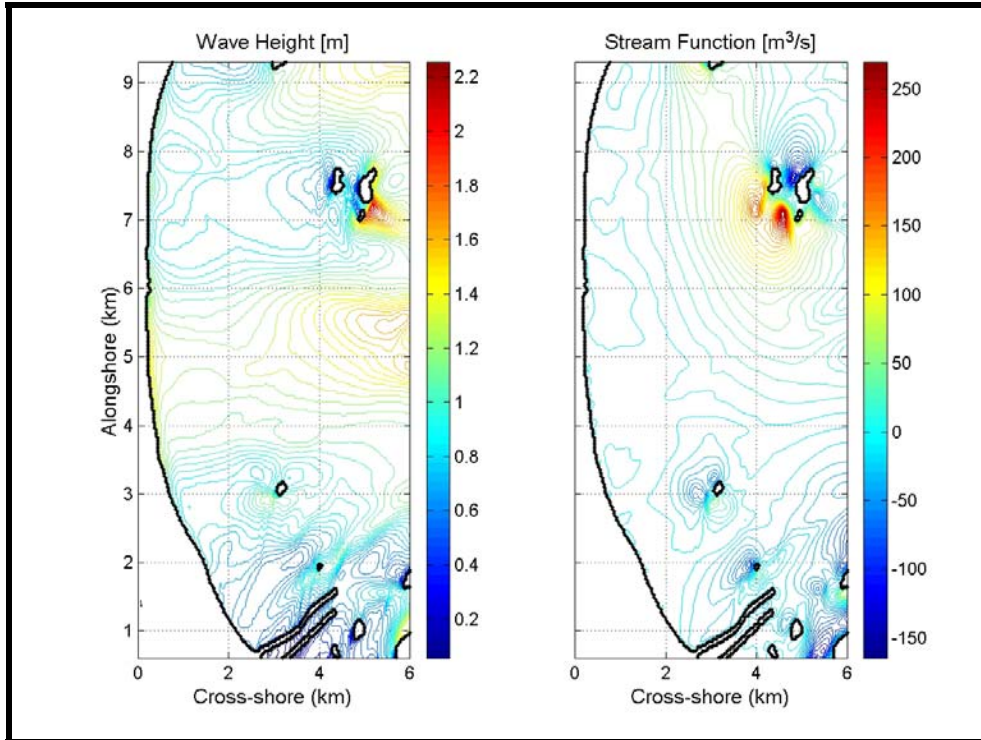
**Figure 13-B2. Sediment flux and flux divergence for a northeast (55 to 75 degree) wave directional approach simulation.**



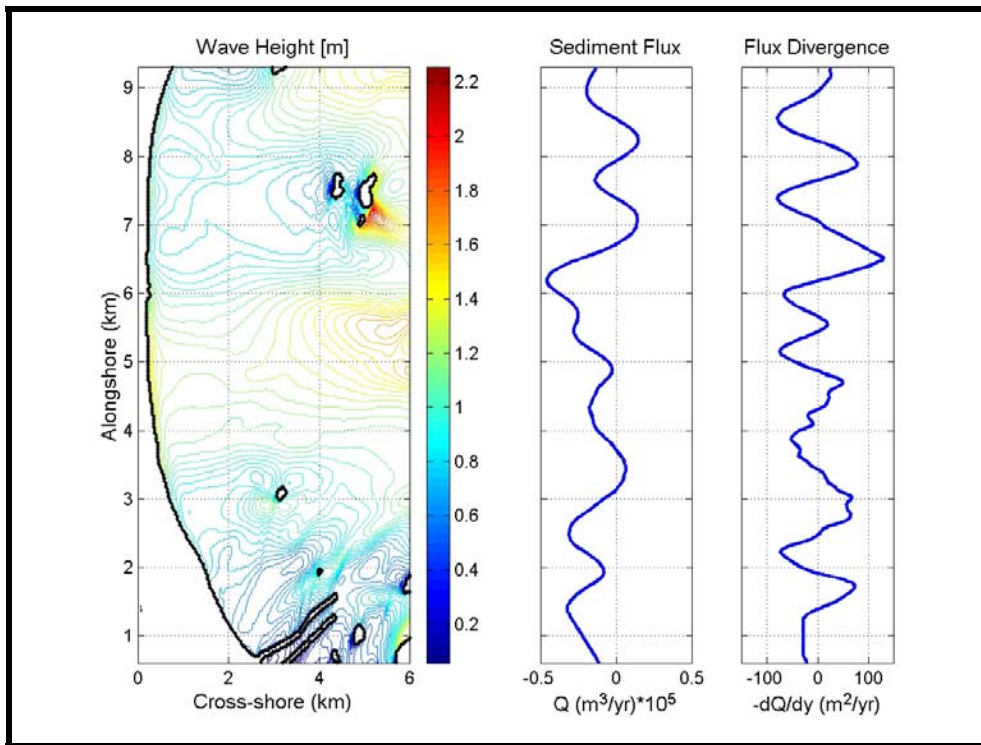
**Figure 13-B3. Wave height and stream function for an east-northeast (75 to 90 degree) approach condition.**



**Figure 13-B4. Sediment flux and flux divergence for an east-northeast (75 to 90 degree) wave directional approach simulation.**

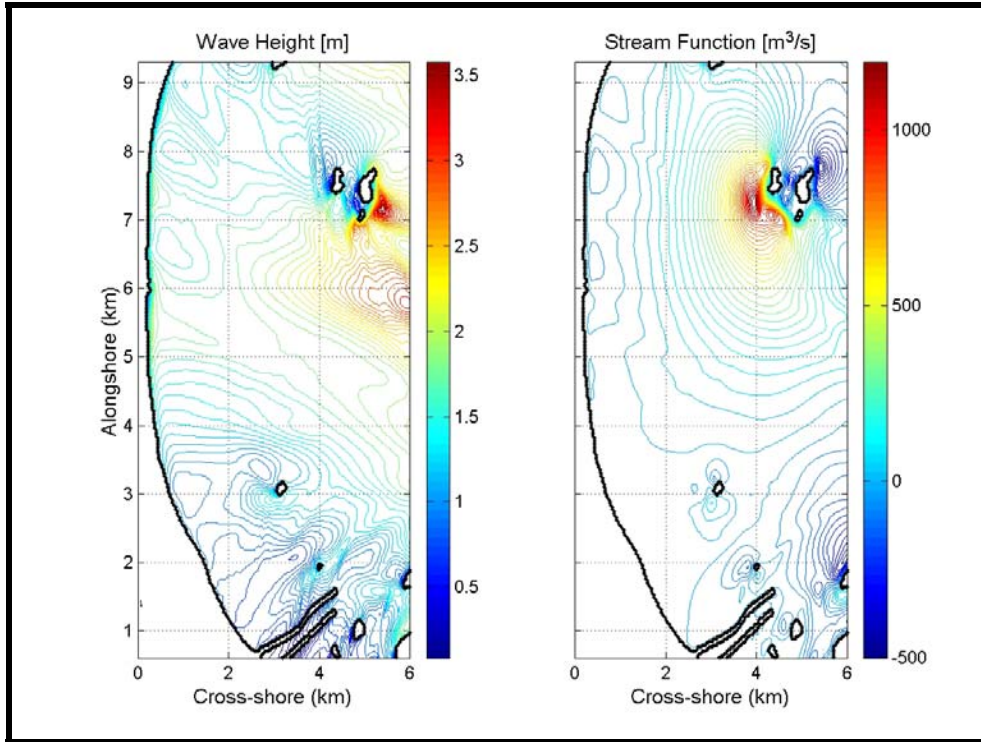


**Figure 13-B5. Wave height and stream function for an east-southeast (110 to 130 degree) approach condition.**

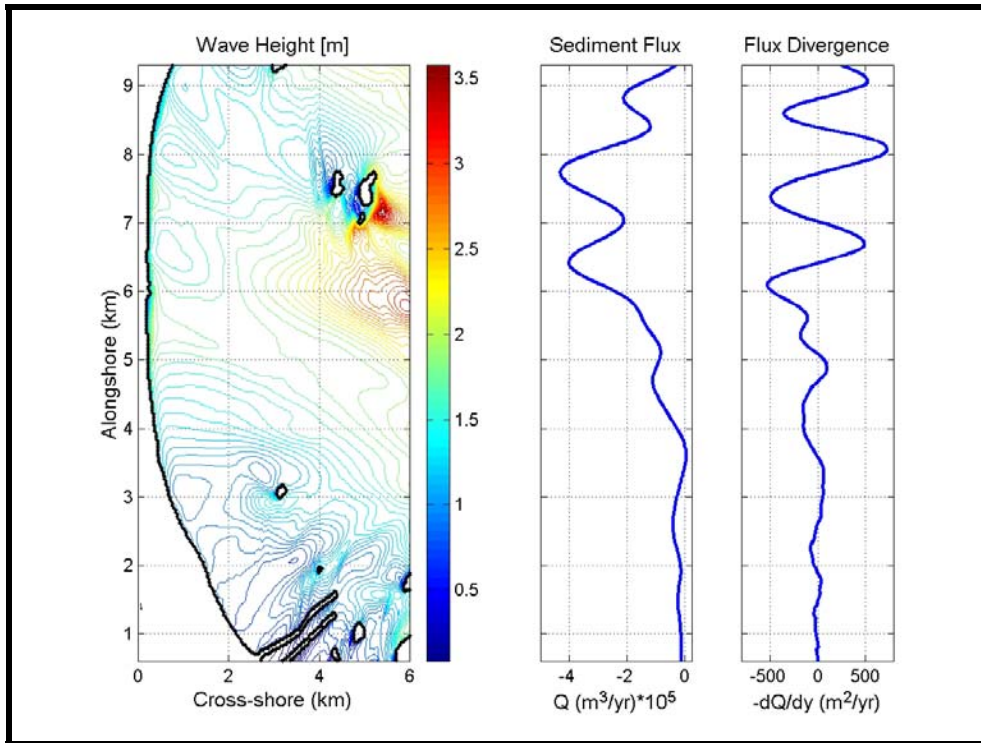


**Figure 13-B6. Sediment flux and flux divergence for an east-southeast (110 to 130 degree) wave directional approach simulation.**

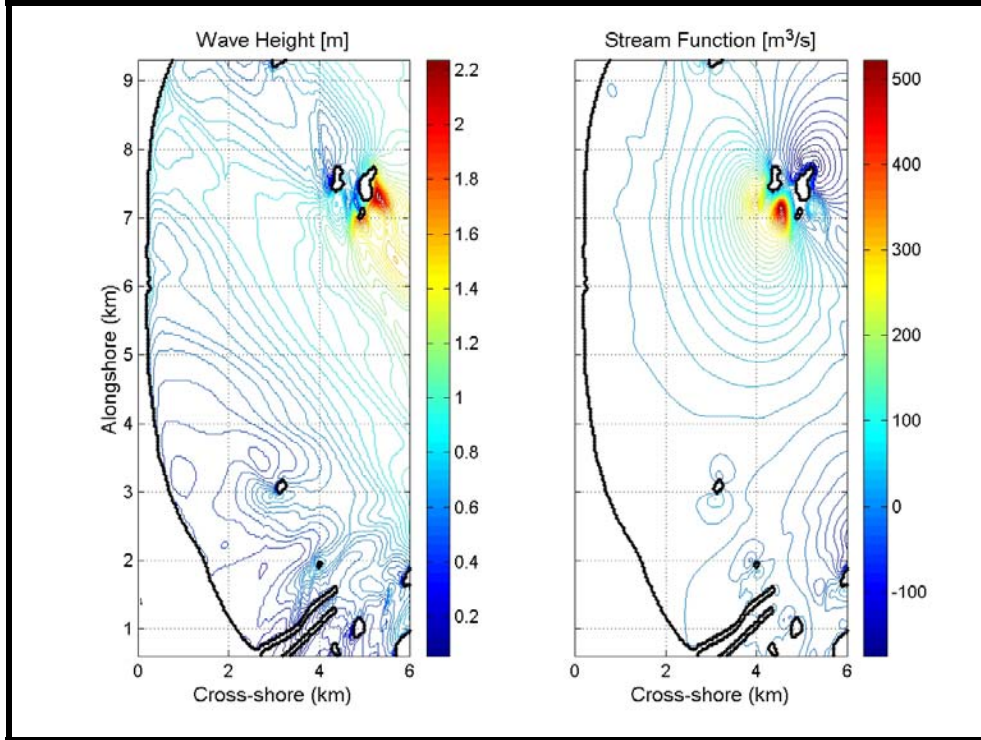




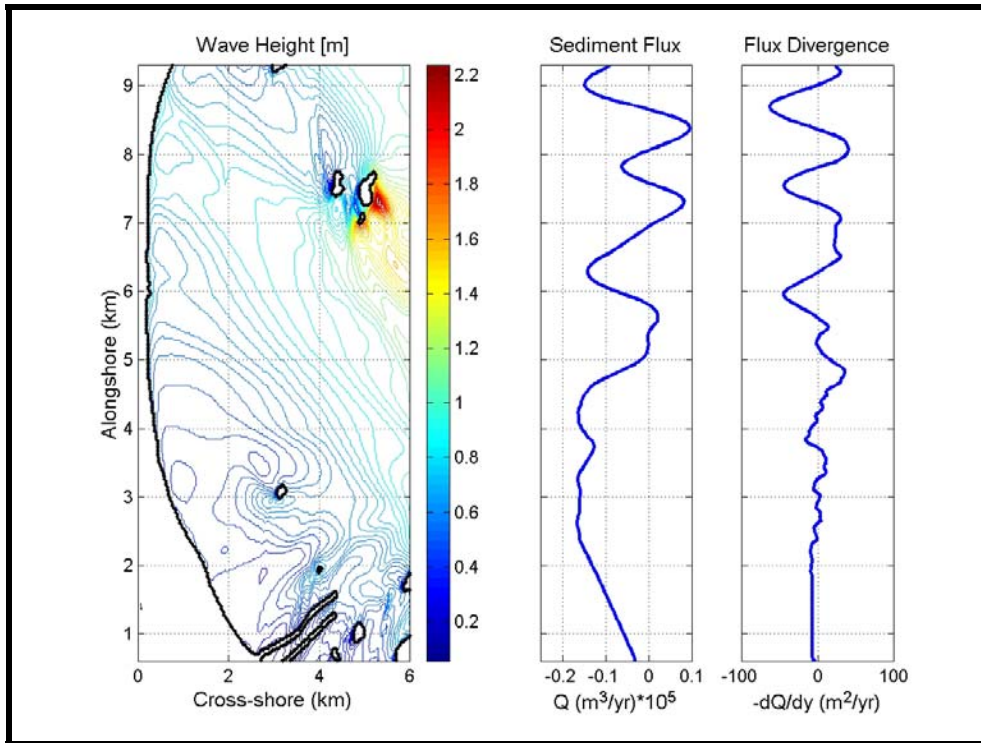
**Figure 13-B7. Wave height and stream function for a southeast (130 to 150 degree) approach condition.**



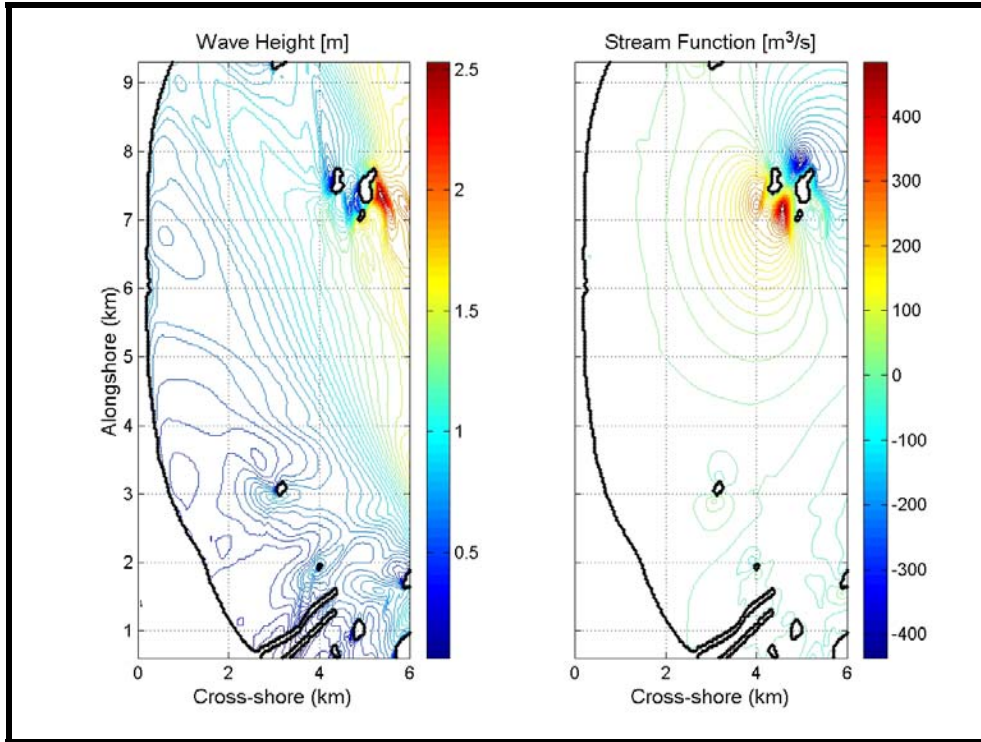
**Figure 13-B8. Sediment flux and flux divergence for a southeast (130 to 150 degree) wave directional approach simulation.**



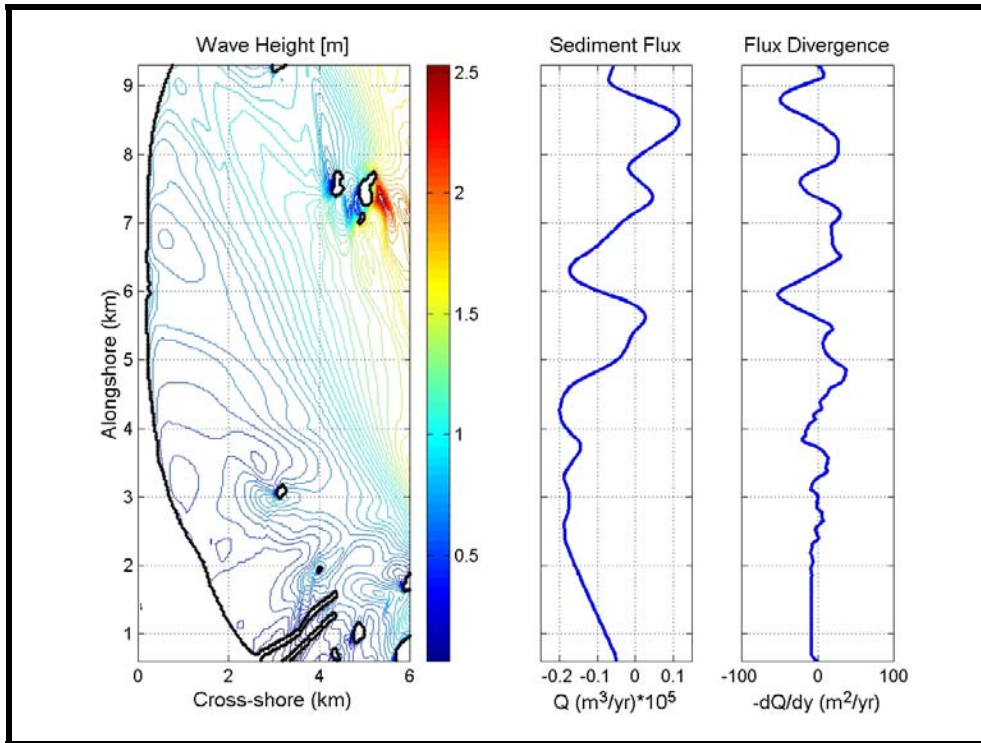
**Figure 13-B9. Wave height and stream function for a south-southeast (150 to 165 degree) approach condition.**



**Figure 13-B10. Sediment flux and flux divergence for a south-southeast (150 to 165 degree) wave directional approach simulation.**

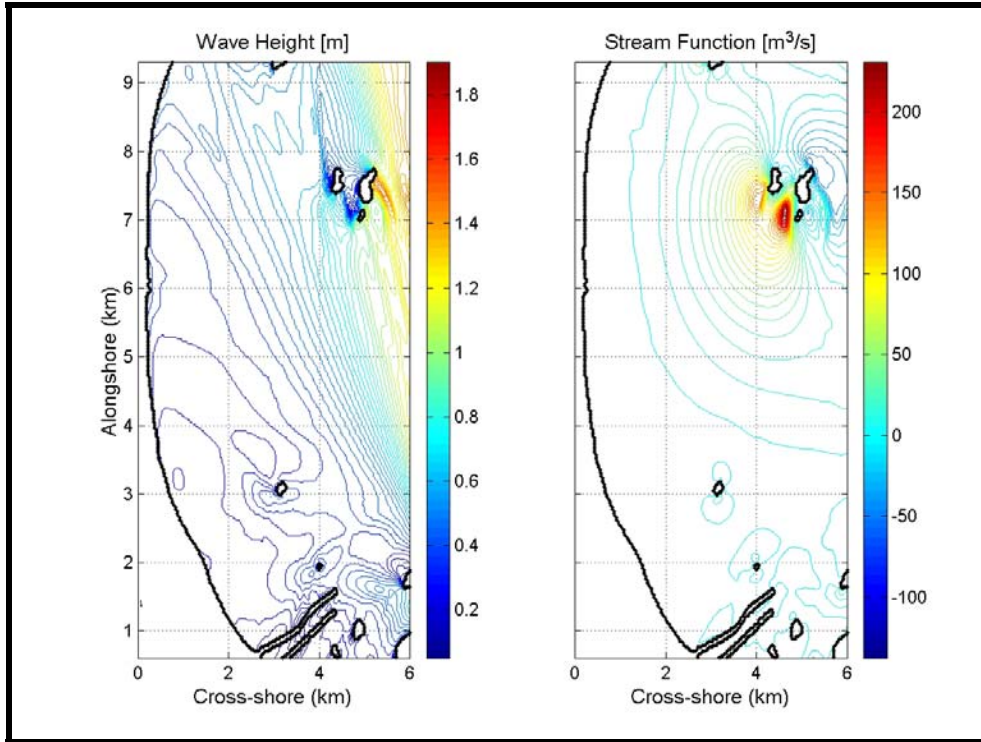


**Figure 13-B11. Wave height and stream function for a south (165 to 185 degree) approach conditions.**

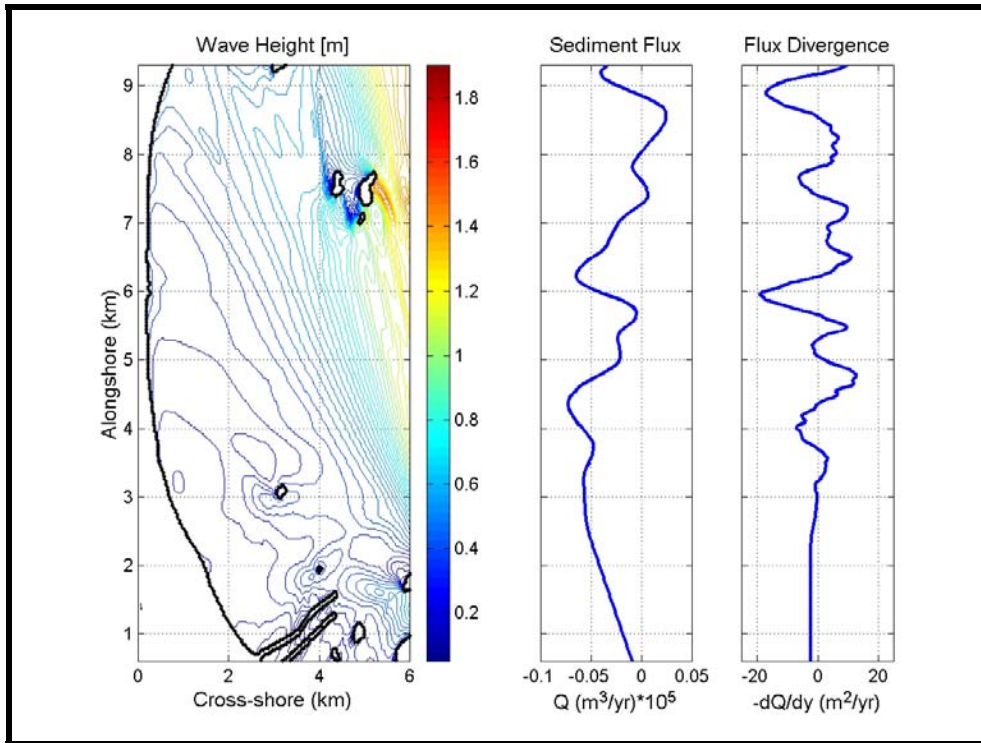


**Figure 13-B12. Sediment flux and flux divergence for a south (165 to 185 degree) wave directional approach simulation.**





**Figure 13-B13. Wave height and stream function for a south-southwest (185 to 210 degree) approach condition.**



**Figure 13-B14. Sediment flux and flux divergence for a south-southwest (185 to 210 degree) wave directional approach simulation.**